



SUMMARY COMMUNITY
CONSULTATION REPORT

Family and Children's Framework

9243 8888 | mvcc.vic.gov.au

Contents

Executive summary3

Consultation process4

Consultation fast facts5

Moonee Valley service areas6

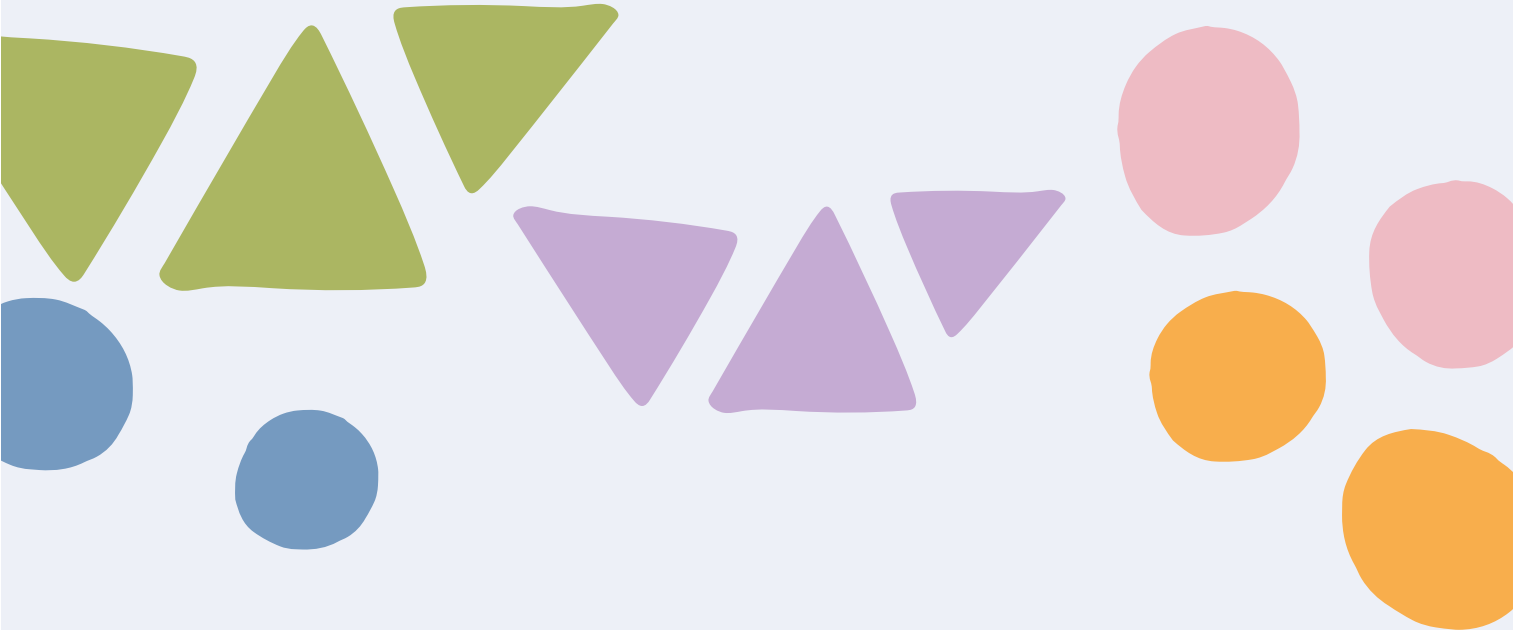
MV2040 Themes.....7

Australian Research Alliance for Children and Youth (ARACY) the Nest8

Key Findings9

Conclusion 11

Next steps 12



Executive summary

Moonee Valley City Council (Council), through the MV2040 Strategy, is committed to supporting local families to give children the best possible start in life.

To help realise this commitment, Council is developing a Family and Children's Framework (Framework). This Framework has a focus on children aged 0-6 years and is intended to guide the collective efforts of Council, a range of relevant service providers, policy makers and the community towards improved outcomes for children in Moonee Valley.

This will enable all stakeholders to effectively serve children in Moonee Valley so that they have the best start to life.

The primary question asked of the community was:

"What does a good life in Moonee Valley look like for children (aged 0-6 years) and their families?"

Individuals could participate in the consultation in a variety of ways, including:

- online survey feedback
- written submissions
- online feedback sessions
- children's drawings.

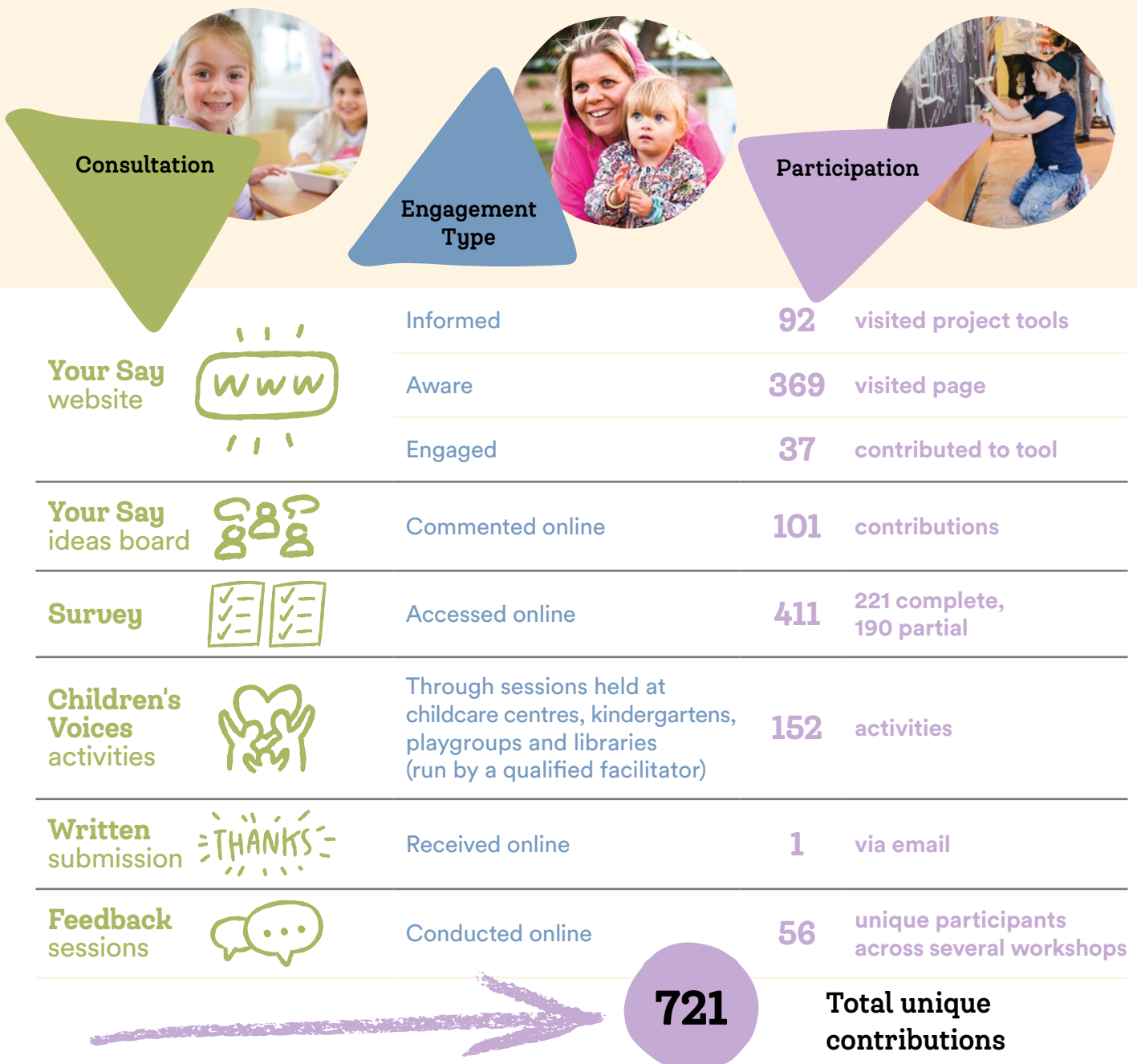


"Library makes me happy - when I borrow the book and read it."

Mehar, 4 years and 5 months

Consultation process

The primary target of the consultation was parents/carers of children aged 0-6, professionals who work with children and the children themselves. Below provides information about the consultation participation.



The consultation was open from 5 June until 30 July 2023, and was widely promoted to Moonee Valley community members and those that work in the municipality. The consultation had a high response rate consisting of parents/carers, professionals, and children's voices with more than 720 voices captured in total.

Consultation fast facts

21%

of overall responses (152)
were from children

27%

of survey respondents (60)
usually speak a language
other than English at home

24%

of survey respondents (49)
were born outside of Australia

287

survey respondents indicated they
were the parent or carer of a child
aged 0-6 in Moonee Valley

144

survey respondents indicated that
they work with young children (0-6)
and their families in Moonee Valley

90%

The majority of survey respondents
identified as women (90%)

60%

The majority of survey respondents
were aged 35-49 years (60%)

Council officers also attended a Yarning Circle discussion with local Wurundjeri Woi-wurrung Elders to discuss the Family and Children's Framework

Measuring the Consultation findings

Recurring themes that emerged from across the consultation process have been themed against three relevant domains.

These are:

- the Moonee Valley 2040 vision (MV2040)
- the domains within the Australian Research Alliance for Children and Youth's (ARACY's) The Nest, and
- service areas of Moonee Valley City Council.





Moonee Valley service areas

Moonee Valley is a local government within the north-west metropolitan area of Melbourne, Victoria, Australia, established in 1994 after a merger between the City of Essendon and City of Keilor. The Moonee Valley City Council are responsible for providing a range of community services for residents and businesses within Moonee Valley.

These services are broken down into the following categories:

- Building services
- Civic services
- Community information, education, advocacy and engagement
- Home care and community support
- Permits
- Statutory planning
- Waste and recycling
- Youth development
- Community development
- Economic and business development
- Public health and safety
- Strategic land use planning
- Environment and sustainability
- Libraries
- Neighbourhood and street cleaning
- Animal Management
- Reconciliation
- Leisure, sport and recreation
- Arts and Culture
- Community facilities and property management
- Children and family services
- Traffic, transport, pedestrian and drainage network
- Parks, gardens and open space management

MV2040 Themes¹

MV2040 is Council's long-term strategy for improving the health, vibrancy and resilience of our city over the next two decades. It has been prepared in consultation with the community to shape the type of city and neighbourhoods we want to live in.

The themes for MV2040 are:



FAIR

QEENTE BOORDUP

'fair' in the Woi-wurrung language



THRIVING

BANDINGITH

'doing well' in the Woi-wurrung language



CONNECTED

YANONINON MAGGOLEE

'travel here' in the Woi-wurrung language



GREEN

WUNWARREN

'green' in the Woi-wurrung language



BEAUTIFUL

NGA-ANGO GUNGA

'breathtaking' in the Woi-wurrung language

¹ MV2040, 2024. 'MV2040 Strategy'. Moonee Valley City Council. <https://mv2040.mvcc.vic.gov.au/>

Australian Research Alliance for Children and Youth (ARACY) the Nest²

The Nest is Australia's wellbeing framework for children and young people. It's a way of thinking about the whole child in the context of their daily lives, viewing wellbeing in a way that brings together the different elements a child or young person needs to thrive.

The Nest conceptualises wellbeing as **six interconnected domains** that support each other to help children reach their potential. The six domains of the Nest are:

1 Valued, loved, and safe

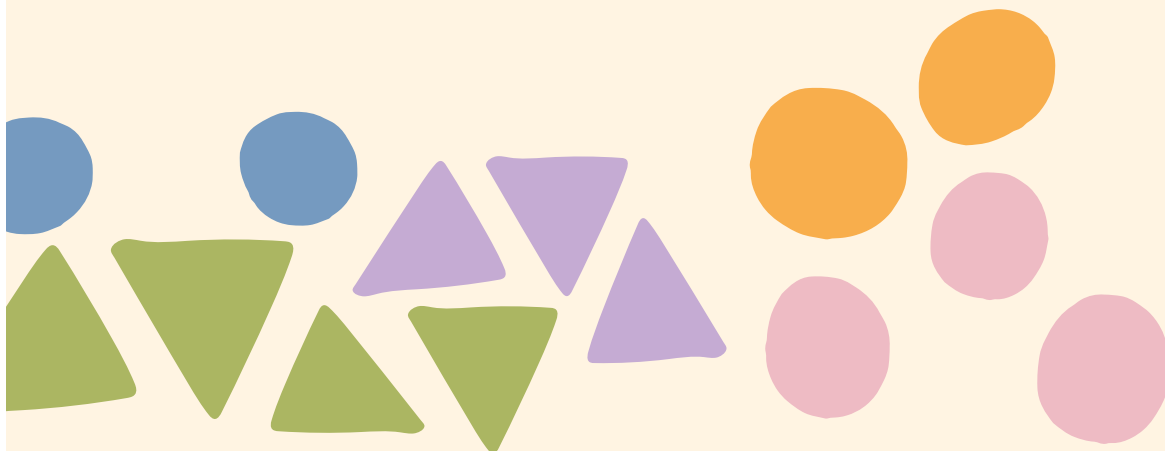
2 Material basics

3 Healthy

4 Learning

5 Participating

6 Positive sense of identity and culture



² ARACY, 2024. 'What's in the nest?'. Aracy. <https://www.aracy.org.au/documents/item/700>

Key Findings

The consultation provided valuable feedback across all areas of service, the MV2040 vision and ARACY's wellbeing framework for children. There are a broad range of themes and ideas that feature within the feedback. Moonee Valley City Council are thankful for the contribution of all the families, carers, children, and professionals who took the time to contribute their ideas.

Key priorities of the consultation for each measurement domain are grouped below.

Moonee Valley service areas: Parks, gardens and open space management

Across all aspects of the consultation, parks, gardens, playgrounds and open space was overwhelmingly the most popular recurring theme. Families across Moonee Valley love the parks, playgrounds and open space.

“Visiting Queens park is our favourite space...”

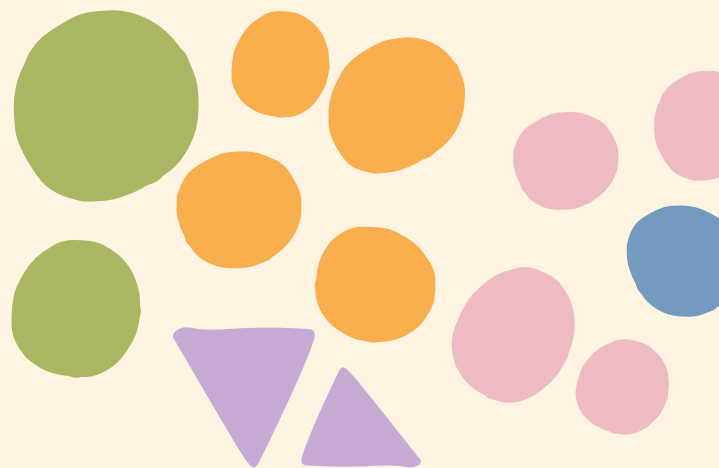
However, it was also noted that upgrades should be made to these parks, specifically to aid in the development of children and allow for a range of abilities and to include more nature play.

“Improved playgrounds, the quality of equipment at our local playgrounds is very poor... The playgrounds do not encourage children to build and strengthen their gross motor skills, challenge themselves and not enticing for children to want to be outside and engaging in physical activity.”

Moonee Valley service areas: Children and family services

Children and family services was another popular theme throughout the consultation. Children and their families love Moonee Valley's existing playgroups, childcare and kindergartens and services provided by Council's Maternal Child Health Teams. There was a recurring theme that these services could be expanded, and families also wished there were options for LGBTQIA+/rainbow playgroups, and additional non-gendered or dad's groups within the area.

“Re-calibrate new parents group to actively include fathers and same sex care givers with specific sessions for these caregivers.”



MV2040 Themes: Thriving

The overall vision that consultation respondents had for Moonee Valley is a place where children can thrive. This includes access to culturally appropriate services, opportunities for learning and inclusion and accessibility to these services.

“More all abilities access to all community spaces. More activities that do not requite (sic) a lot of verbal explanations so that culturally and linguistically diverse people can also participate freely.”

The need for cultural inclusion and education was strongly highlighted across all levels of the consultation, with many seeing this as the way to create a “thriving” community. Many comments across the consultation focused on ways to activate and increase existing parks, gardens and open spaces to achieve a thriving community, especially in Keilor East and Avondale Heights.

MV2040 Themes: Fair

Professionals identified the top issues for families living in Moonee Valley as cost-of-living factors, a busy work/life, language barriers, difficulty accessing services or wait times for services, and not being able to access their preferred kindergarten or childcare close to home.

“Affordable housing, more kinder places. Updating local council service buildings that families utilise.”

This feeling was reflected across all areas of the consultation. Parents and carers love the existing options for kinder, playgroup and library activities, however there was a distinct expression of need for more local kinder and playgroup facilities.

“Better suitable Playgroup facilities for all, childcare and kinder facilities are important for children over 3 but Playgroup is important for all 0-6 year olds who do not go to childcare.”

ARACY the Nest: Material basics

The sentiment from MV2040 can be similarly translated into ARACY’s ‘Material Basics’ category. Respondents both loved the existing services and opportunities for participation and wished that there were more accessible and equitable options for their communities. This wish for accessibility was strongly voiced in relation to the Keilor East and Avondale Heights areas across all levels of the consultation.

“Tram access through East Keilor.”

“Access to public transport, in Avondale Heights”

“More green spaces Avondale Heights, Keilor East.”

ARACY the Nest: Learning

The idea of equity in access was also popular in comments that related to ARACY’s ‘Learning’ category. Respondents across all levels of the consultation expressed their desire for access to education.

ARACY the Nest: Healthy

The importance of healthy children was front of mind for parents and carers. Respondents expressed desire to be able to access services when they need to support the development of their children.

“Access to services like mental health for children and families.”



Conclusion

Families, carers and their children who live in Moonee Valley, as well as professionals who work with families and their children, love where they live and work.

They take great pride in their open spaces, parks and gardens and the existing playgrounds, playgroups and kinder options. They are passionate about the future of their community and aspire to make Moonee Valley a fair and equitable place to live, work and play.

Respondents were careful to highlight the positives of existing places, spaces and services, whilst expressing the need for better access and distribution of them.

Find out more about the consultation and read the full report by visiting <https://yoursay.mvcc.vic.gov.au/fcf>



Next steps

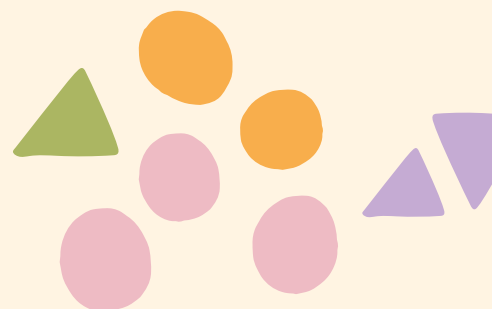
Our community consultation was underpinned by the Australian Research Alliance for Children and Youth (ARACY) The Nest Action Agenda which ensures a robust, evidence-based foundation.

The ARACY Framework includes five key themes of feeling valued, loved, and safe, having access to life's necessities, being healthy, learning, being involved and connected and having a positive sense of identity and culture.

These same themes came through as clear priorities for a good life in Moonee Valley as evidenced in our consultation with community and organisations who support young children and their families in our municipality.

Council looks forward to future possibilities and partnerships as we now develop an Action Plan to respond to the aspirations of the community around these themes and evidence these efforts in our strategic planning, service plans and in practice, when supporting children and their families.

We encourage other organisations in our municipality and region to engage with these themes and develop their own responses as appropriate.



"When I see the ducks in the water. That makes me very happy. Eating ice cream in the park also makes me happy."

Adira, 5 years

Moonee Valley Language Line

العربية	Arabic	9932 1471	Ελληνικά	Greek	9932 1474	Español	Spanish	9932 1477
廣東話	Cantonese	9932 1472	Italiano	Italian	9932 1475	Türkçe	Turkish	9932 1478
Hrvatski	Croatian	9932 1473	Somali	Somali	9932 1476	Tiếng Việt	Vietnamese	9932 1479

All other languages 9932 1480

National Relay Service 13 36 77 or relayservice.com.au

